



The state is normally abbreviated, WIS., unless listed ( ie: WISC, or WI )

The following are illustrations of Types referenced by the PIC Type Note, in the listings.



1.4659



1.46(14/43)



2.4643



2.4647



2.4644



2.4287 LAONA



WI 2.460005, ZIP 2.467 FONT





2.46623



2.64(1/4)



0.4284, and a second example



3.76



7.4662



4.4673



1.1644



2.46(45/94)



2.468



2.45926

The following are examples of different styles found from Wisconsin towns, with type numbers.



1.2243



1.4613



1.51



2.4174



2.42



2.4214



2.4243





2.425



2.4263



2.4264



2.427



2.428



2.4283



2.4293



2.4294



2.44(55/94)



2.46



2.46 CON



WI 2.460005



2.461



2.4613



2.46(1/9)



2.46(4/9)



2.465



2.4663



2.4664, and a similar modern one



2.466454





2.467



2.468



2.469



2.48(1/5)



2.5214



2.525



2.528



2.56



2.5614



2.569



2.625



2.64(5/9)



2.66



2.660005



2.66(44/94)



2.669



4.4213



4.4253



4.425354



4.4254



4.42(13/53)



4.4613



4.46134



4.4614 CON



4.46(14/44)



4.46434



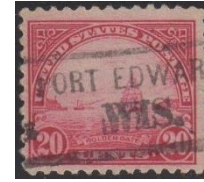
4.4644



4.4662



4.48(13/53)



4.48(43/74)



4.5213, and a variety



4.5662



4.6553



7.4643 DLR



7.4644 VBR, and another example



7.5544 SLR Whitehall



0.4644 CON



0.4662



0.5544



WISCONSIN March 19, 2019

Type	Note	Town	Note	Usage
2.64(5/9)		ABBOTSFORD	CQ	1940
2.66		ABBOTSFORD	CQ	1926
1.1642		ABLEMAN,		1926
1.1647		ABLEMAN,		1945
2.4644		ABLEMAN,		1932
1.1263		ABRAMS,		1938
1.1663		ABRAMS,		1938
1.464308		ADAMS WI		1968
1.4659	PIC	ADAMS		1954, 57
2.4293		ADAMS	CQ	1926
2.46	CON	ADAMS,		1938
4.42(54/74)		ADAMS		1926
4.4274		ADAMS		1931, 32
1.1646		ALBANY,		1954
2.4293		ALBANY	CQ	1938
2.46		ALBANY,		1938
2.469		ALBANY	CQ	1932
4.4254		ALGOMA		1923
4.4644		ALLENTON		1926, 38
2.425		ALLENTOWN	CQ	1926
2.4294		ALMA	CQ	1914
2.44(5/9)		ALMA		1959
2.46	CON	ALMA,		1954
4.4254		ALMA		1926
4.4274		ALMA		1931
4.4644		ALMA		1938, 40
7.4643	DLR	ALMA		1922
2.4243		ALMA CENTER,		1938
2.466454		ALMA CENTER		1957
2.469		ALMOND		1938
1.1642		AMHERST,		1938
2.460005		AMHERST, / WI		1968
2.460005		AMHERST JUNCTION, / WI	JCT	1977
2.561		AMHERST JUNCTION	CQ	1926
2.46	CON	ANIWA,		1938
1.1662		APPLETON	CQ	1908
1.4662		APPLETON,		1908
1.2644		ARCADIA,		1914
2.46		ARCADIA,		1922, 26, 32
2.465		ARCADIA		1922
2.5264		ARCADIA		1918

2.467005		ARENA, / WI		1954
1.161305		ARGONNE WI		1975
4.4274		ARGONNE		1926, 29
2.44(55/94)		ARGYLE		1938
2.4644		ARGYLE,		1954
2.466454		ARGYLE,		1954
2.66		ARLINGTON		1918
1.1173		ARNOLD	CQ	1926
2.46		ARPIN		1938
2.4664		ARPIN	CQ	1926
4.4253		ASHLAND,		1922
1.4664		ATHENS,		1931
2.4293		ATHENS,		1938
2.46		ATHENS,		1922
4.4254		ATHENS		1926
4.4273		ATHENS		1917
2.64(55/94)		AUBURNDALE		1938
4.4254		AVOCA		1926
2.4293		BAGLEY,		1940
2.46		BAGLEY		1917, 18
2.46	CON	BAGLEY,		1954, 62
2.460005		BAGLEY, / WI		1979
2.56		BAILEYS HARBOR,		1953
2.46		BALDWIN,		1932, 40
2.64(54/94)		BALDWIN		1954
2.4243		BALSAM LAKE,		1930
2.46	CON	BALSAM LAKE,		1968
2.669		BANGOR	CQ	1954
4.4253		BANGOR		1922, 26
4.4274		BANGOR		1926
4.4644		BANGOR		1926
1.16		BARABOO,		1914
2.46		BARABOO		1917
4.4273		BARABOO		1922, 26, 30
4.4254		BARABOO		1922, 23, 26
4.48(44/73)		BARABOO		1917
1.46(14/43)	PIC	BARABOO, WIS. (DEVILS LAKE RUR. STA.) / (LATE NORTH SHORE RUR. STA.)		1936
2.46	CON	BARNEVELD,		1938
2.46		BARRON,		1926
2.460005		BARRON, / WI		1975, 78, 81
2.469		BARRON	CQ	1922

2.46951		BARRON		1938
2.46	CON	BARTON,		1954
2.466454		BARTON	CQ	1938
2.6694		BARTON		1954
2.46		BAYFIELD,		1931, 32
2.4643		BAYFIELD,		1940
2.4214		BEAR CREEK	CQ	1922
2.56		BEAR CREEK	CQ	1917
2.4243		BEAVER DAM	CQ	1933
2.46		BELGIUM,		1954
2.4644		BELGIUM,		1926, 31, 38
2.6694		BELGIUM		1938, 40
4.4644		BELGIUM		1938
2.46531		BELLEVILLE,		1926, 32, 34
4.4274		BELMONT		1926
1.2573		BELOIT,		1917, 26, 31D, 32
2.4664		BELOIT,		1913, 17
2.46		BENTON,		1914, 26
0.4692		BENTON	CQ	1917
2.46	CON	BIRNAMWOOD,		1954
2.460005		BIRNAMWOOD / WI	CQ	1959D
2.4644		BIRNAMWOOD	CQ	1926
2.64(54/94)		BIRNAMWOOD		1940
2.425		BLACK CREEK,		1917
2.46		BLACK CREEK		1917
2.460005		BLACK CREEK / WI	CQ	1978
2.461		BLACK RIVER FALLS	CQ	1926
2.460005	PIC	BLACK RIVER FALLS, / WI		1964
2.4614		BLANCHARDVILLE	CQ	1927
2.521		BLANCHARDVILLE	CQ	1922
0.46136		BLANCHARDVILLE	CQ	1938
1.56		BLOOMER		1916
2.46		BLOOMER,		1931D
2.425		BLOOMINGTON,		1932
1.1613		BLUE RIVER,		1932
2.465		BLUE RIVER	CQ	1931D
2.46	CON	BONDUEL,		1959D
2.467005		BONDUEL / WI		1978
4.4274		BONDUEL		1926
2.467005		BOSCOBEL / WI	CQ	1979
7.4643	DLR	BOSCOBEL		1917
2.660005		BOULDER JUNCTION / WI	CQ	1977
2.4674		BOWLER,		1922



1.4643		BOYCEVILLE,		1922
2.460005		BOYCEVILLE, / WI		1967
2.46		BOYD,		1938, 53
2.46641		BOYD,		1908
2.4694		BOYD		1938
2.4263		BRANDON,		1931
2.669		BRANDON		1938
2.4243		BRANTWOOD	CQ	1938
4.4614		BRILLION		1930, 38
2.425		BRODHEAD	CQ	1926
2.46		BRODHEAD,		1926, 38
2.46	CON	BROOKFIELD	CQ	1954
2.64(54/94)		BROOKFIELD	CQ	1938
1.1644		BROOKLYN,		1923
2.4214		BROWNSVILLE,		1946
2.4616		BROWNSVILLE	CQ	1938
2.46	CON	BRUCE,		1952
2.460005		BRUCE, / WI		1967
4.4254		BRUCE		1921
2.465		BURNETT	CQ	1922
2.4293		CABLE	CQ	1926
2.467005		CABLE, / WI		1967
2.4254		CADOTT,		1926, 31
2.4293		CADOTT	CQ	1926
2.46	CON	CADOTT,		1954
1.2654	ASA	CALVARY,		1930D
1.1277	ASA	CAMBRIA,		1926
2.4263		CAMBRIA,		1926, 31, 38
2.466454		CAMBRIA,		1958
2.6494		CAMBRIA	CQ	1938
2.465		CAMBRIDGE,		1928, 31, 38
4.4644		CAMBRIDGE		1938
2.4283		CAMERON,		1926
2.46		CAMERON,		1926, 38, 40
2.46002		CAMERON,		1923
2.465		CAMERON	CQ	1914
2.669		CAMERON		1938
4.4253		CAMERON		1917
1.26	CON	CAMPBELLSPORT,		1938, 39, 49
2.4284		CAMPBELLSPORT	CQ	1938
2.4613		CAMPBELLSPORT,		1943
2.46(1/9)		CAMPBELLSPORT		1938
2.525	CON	CAMPBELLSPORT,		1926, 30, 34, 37

4.4644		CAMPBELLSPORT	CQ	1926
4.4643		CAMPBELLSPORT	CQ	1926
2.4214		CAMP DOUGLAS,		1926, 31, 40
2.4644		CAMP DOUGLAS,		1937, 40
2.64(55/94)		CAMP DOUGLAS		1938
2.4254		CARROLLVILLE	CQ	1926
1.1643		CASCO, WI		1975
2.46	CON	CASCO,		1961
2.46002		CECIL		1926
2.4664		CECIL,		1954
2.46		CEDARBURG,		1938
1.2263		CEDAR GROVE		1923
2.4214		CEDAR GROVE,		1926
2.425		CEDAR GROVE	CQ	1922, 33
2.64(5/9)		CEDAR GROVE		1938, 40, 57, 62
2.467005		CEDAR GROVE, / WI		1967, 68
2.4263		CENTURIA,		1938
2.46		CENTURIA,		1926, 38
2.669		CENTURIA		1938
2.4294		CHETEK	CQ	1917
2.46		CHETEK,		1926
2.467005		CHETEK, / WI		1971
2.4674		CHETEK	CQ	1938
4.4254		CHETEK		1922, 23, 26
4.4644		CHETEK		1926, 31
1.4252		CHILTON,		1916, 26, 30, 34, 37, 38
2.465		CHILTON	CQ	1914
2.4674		CHILTON,		1922, 31, 32
2.5214		CHIPPEWA FALLS	CQ	1912, 17
4.4612		CHIPPEWA FALLS,		1916, 17, 22
4.4614	CON	CHIPPEWA FALLS		1922, 23, 26, 32
4.4613		CHIPPEWA / FALLS, WIS.		1931
4.46131		CHIPPEWA / FALLS, WIS.		1917D, 22, 26
4.5613		CHIPPEWA FALLS, / WISC.		1922, 26
5.4614		[ CHIPPEWA / FALLS, ] [ WIS. ]		1922
2.46		CLAYTON,		1926
2.4263		CLEAR LAKE,		1931, 32, 38
1.4648		CLEVELAND		1936
2.4644		CLEVELAND,		1923
4.4614		CLEVELAND		1926
2.260005		CLINTON, / WI		1968
4.5213		CLINTONVILLE,		1918, 23, 26
4.4613		CLINTONVILLE,		1922



7.4643	DLR	CLINTONVILLE		1917, 22
2.46		COBB,		1954
4.4254		COLBY		1923
1.1619	PIC	COLEMAN,		1932
2.46		COLEMAN	CQ	1923
2.64(5/9)		COLEMAN		1954
4.4644		COLFAX		1916, 26, 32, 38, 40
2.4653		COLOMA,		1938
2.4673		COLOMA,		1954
2.4664		COLOMA	CQ	1938
7.4643	DLR	COLUMBUS		1917
2.46		CONOVER,		1959D
4.4644		CORNELL,		1922
2.64(5/9)		CORNUCOPIA		1938
4.6253		CORNUCOPIA		1917
2.460005		COTTAGE GROVE, / WI		1954
7.4643	DLR	CRANDON		1923, 26, 30, 32, 38, 40, 43SD
2.4293		CRIVITZ,		1926
2.46	CON	CRIVITZ,		1954
4.4254		CRIVITZ		1923
2.425		CROSS PLAINS,	CQ	1938
2.4614		CROSS PLAINS,		1932
2.5254		CROSS PLAINS,		1924
2.64(5/9)		CUBA CITY		1938
1.1214		CUDAHY,		1931
2.46631		CUDAHY	CQ	1918
2.469		CUDAHY,		1922, 31
4.46441		CUDAHY		1917D, 23, 26, 31D, 32
4.46444		CUDAHY,		1922, 23
4.4274		CUMBERLAND		1938
2.467554		DALE		1938, 54
2.4263		DALLAS,		1926, 38
2.46		DALTON	CQ	1916
2.46		DANBURY	CQ	1926
2.46431		DANBURY		1922, 31
2.4664		DANCY	CQ	1917, 32
1.1274		DARIEN,		1931
2.46		DARIEN,		1931
2.469		DARIEN	CQ	1938
2.64(5/9)		DARIEN		1954
2.4263		DARLINGTON	CQ	1926
2.46		DARLINGTON	CQ	1954
2.64(5/9)	CON	DARLINGTON	CQ	1938, 43

2.66		DARLINGTON		1914, 17
2.46		DEERBROOK	CQ	1938
2.64(5/9)		DEERBROOK		1938
2.425		DEERFIELD,		1922, 38
2.46		DEERFIELD	CQ	1954
2.460005	CON	DEERFIELD / WI	CQ	1961
2.465		DEER PARK	CQ	1954
2.425		DELAFIELD	CQ	1922, 23, 31
2.46		DELAFIELD,		1931
2.46	CON	DELAFIELD,		1938, 59D
2.4653		DELAFIELD	CQ	1938
2.460005	CON	DELAFIELD, / WI		1959D, 68
4.4253		DELAVAN		1916, 22, 26, 30, 3, 32, 31, 38
4.4283	PRO	DELAVAN,		1922
2.4263		DENMARK	CQ	1938
2.46		DENMARK,		1926, 31, 32, 32
2.465		DENMARK,		1922, 26
2.669		DENMARK		1938
1.2643		DODGE,		1938
2.4214		DODGEVILLE,		1926, 31, 32
2.46		DODGEVILLE,		1938
2.465		DODGEVILLE,		1938, 43
2.4653		DODGEVILLE	CQ	1938
2.4654		DODGEVILLE,		1925, 25SD, 26, 30, 31
2.669		DODGEVILLE		1938
2.4214		DORCHESTER	CQ	1926
2.4614		DORCHESTER	CQ	1930
2.4653		DORCHESTER,		1947
2.460005		DOUSMAN, / WI		1959D
2.669		DOUSMAN		1938
2.46		DRESSER,		1938
2.46		DRUMMOND	CQ	1932
2.467		DUBLIN,		1932
2.46		DURAND	CQ	1917
2.46	CON	DURAND	CQ	1926
2.46446		DURAND,		1926, 32
2.469		DURAND	CQ	1932
2.46	CON	EAGLE,		1938, 54, 61, 65
2.460005		EAGLE, / WI		1975
2.4643	PIC	EAGLE		1938
2.469		EAGLE	CQ	1938
1.2243		EAGLE RIVER,		1921
2.4214		EAST TROY,		1926, 30



2.425		EAST TROY,		1922
2.4263		EAST TROY,		1930, 36, 38, 40
2.46		EAST TROY,		1920, 22
2.64(5/9)		EAST TROY		1938, 54
2.669		EAST TROY		1938
4.4213		EAU CLAIRE		1922, 23, 26
4.4613		EAU CLAIRE		1926, 31, 32
4.46134		EAU CLAIRE,		1916, 23, 26
4.4614		EAU CLAIRE		1916, 17, 22, 23, 26
4.46144		EAU CLAIRE		1916, 17
4.4643		EAU CLAIRE		1916
4.46434		EAU CLAIRE,		1917
7.4294	SLR	EAU CLAIRE	CQ	1913
7.4644		EAUCLAIRE		1913
7.4644	SLR	EAU CLAIRE		1917
2.4293	SLR	EDGAR	CQ	1926
4.4254		EDGAR		1919, 22, 22BH, 23
4.4662		EDGAR		1917, 19, 22BH, 24
2.46		EDGERTON	CQ	1911R
4.42(54/74)		ELAND		1926, 32, 32, 34
2.4674		ELCHO,		1926
2.469		ELEVA		1938
2.425		ELKHORN,		1917
2.4263		ELKHORN,		1926, 30, 31
2.46		ELKHORN,		1926, 32
2.465		ELKHORN,		1918, 22
2.4663		ELKHORN,		1938
4.4643		ELKHORN,		1917, 22
1.1256		ELK MOUND	CQ	1954
2.4263		ELK MOUND	CQ	1926
2.460005		ELK MOUND, / WI		1969, 70
2.4653		ELK MOUND	CQ	1938
2.4293		ELLE		1929
2.64(55/94)		ELLISON BAY		1938, 40
1.456254		ELLSWORTH,		1940
2.4254		ELLSWORTH		1926, 38
2.1656		ELMIRA,		1926, 34
4.4254		ELMWOOD		1922
1.228		ELROY,		1938
0.4283		ELROY		1926
2.4284		ELROY	CQ	1912, 17
2.46		ELROY,		1923, 26
2.4664		ELROY	CQ	1917, 21

4.4253	PRO	ELROY,		1926
4.4273		ELROY,		1923, 26
4.4273		ELROY		1926
2.4644		EMBARRASS,		1962
2.460005		ETTRICK, / WI		1967
2.669		EXELAND		1938
2.669		FAIRCHILD		1938
2.4214		FALL CREEK	CQ	1917
2.4263		FALL CREEK,		1942
2.46		FALL CREEK,		1948
2.46	CON	FENNIMORE,		1938, 48
2.465	CON	FENNIMORE,		1937
2.56		FENNIMORE	CQ	1912
2.64(5/9)		FISH CREEK		1954
2.46		FLORENCE,		1954
4.4644		FLORENCE		1922
1.16	CON	FOND DU LAC	CQ	1917D
4.4613		FOND DU LAC		1922, 25, 25SD
4.4643		FOND DU LAC,		1922, 23, 26
4.42131		FON DU LAC,		1922, 23, 25SD, 26, 30-33
2.5214		FOREST JUNCTION,		1948
2.66		FORT ATKINSON,		1908
2.463*4		FORT ATKINSON	CQ	1908
4.6613		FORT ATKINSON	CQ	1922BH
2.4214		FOUNTAIN CITY	CQ	1926, 38
2.4643		FOUNTAIN CITY,		1926
2.525		FOUNTAIN CITY,		1917, 19
2.46		FOXLAKE	CQ	1917
2.46		FREDERIC,		1954
2.4644	CON	FREDERIC	CQ	1932
2.4663		FREDERIC,		1938, 40
2.46		FREMONT	CQ	1926
2.46	CON	FREMONT,		1938, 54
2.464459	CON	FREMONT, WI /		1988
4.42(53/73)		FREMONT		1913, 22, 17, 26
2.46		FRIESLAND	CQ	1932
2.64(5/9)		FRIESLAND		1938
2.4214		GALESVILLE	CQ	1934
2.4263		GALESVILLE,		1938
2.64(5/9)		GALESVILLE		1938, 43
2.669		GALESVILLE		1949
4.4254		GALESVILLE		1922
2.466454		GAYS MILLS,		1954



2.64(5/9)		GENOA CITY		1938, 54
1.1616		GILLETT,		1954
2.4263		GILLETT,		1926
2.46	CON	GILLETT		1954
4.4673	CON	GILLETT		1926, 29, 31
2.461		GLENBEULAH	CQ	1954
7.4643	DLR	GLENHAVEN		1916, 17, 23, 26, 30, 38
0.4282		GLEN HAVEN / WI		1975
2.4283		GLENWOOD CITY,		1938
2.4653		GLENWOOD CITY,		1926, 31, 32
4.4643		GLENWOOD CITY		1923
7.4643	DLR	GLIDDEN		1917, 22, 26, 31, 38, 40
2.4263		GOODMAN,		1931, 38
2.46	CON	GOODMAN,	CQ	1938
2.469		GORDON		1938, 40
2.4263		GRAFTON	CQ	1926, 38, 40
2.4644		GRAFTON	CQ	1917, 22
2.465		GRAFTON,		1926, 33
2.669		GRAFTON	CQ	1931D, 38, 52
0.4644		GRAFTON,		1914, 16, 17
7.4643	DLR,PRO	GRANTON		1917-18, 20, 22, 26, 30-32, 37-38
2.4243		GRANTSBURG	CQ	1926, 30, 31, 31D, 38, 40
2.64(5/9)		GRANTSBURG		1953
2.46	CON	GRANVILLE,		1938
2.4644		GRATIOT		1917
2.66		GREEN BAY,		1913
4.4614		GREEN BAY		1922, 26, 32
4.46141		GREEN BAY		1926, 32
2.46	CON	GREENDALE,		1938, 54
2.4254		GREEN LAKE,		1938
2.467005		GREEN LAKE, / WI		1971
1.2252		GREENLEAF,		1917
2.669		GREENLEAF	CQ	1938
0.4643		GREENLEAF		1922, 23, 26, 31, 38
1.4613		GREENVILLE,		1930
2.669		GREENVILLE		1938, 58
2.64(5/9)		GREENWOOD		1940, 57
2.46	CON	GRESHAM	CQ	1938
2.4243		HALES CORNERS,		1926, 31D, 32, 38, 52
2.46(1/9)		HALES CORNERS		1938
2.4653		HALES CORNERS	CQ	1938
4.4274		HALES CORNERS		1930D
2.460005		HAMMOND, / WI		1954

2.4254		HANCOCK,		1922, 26
2.4646		HANCOCK	CQ	1937
1.1273		HARTFORD,		1934
1.1644		HARTFORD,		1934, 38
1.2253		HARTFORD,		1914
2.4263		HARTLAND,		1926, 31, 34
2.46		HARTLAND,		1938
2.46	CON	HARTLAND,		1954
2.4644		HARTLAND	CQ	1928SD, 31
2.669		HARTLAND		1938, 56
4.42(54/74)		HARTLAND		1926
2.466454		HATLEY,		1938
2.46		HAUGEN	CQ	1938
2.46	CON	HAUGEN,		1961
2.467005		HAUGEN, / WI		1967
1.1613		HAWKINS,		1968
2.46		HAWKINS,		1938
2.4663		HAWKINS,		1938, 40
2.4214		HAZEL GREEN,		1926
2.46(1/9)		HIGHLAND		1954
2.4644		HIGHLAND	CQ	1926, 31
2.465		HIGHLAND,		1953
2.46642		HIKA,		1908, 13, 22
2.4263		HILBERT,		1926, 38
2.46	CON	HILBERT	CQ	1954
2.465		HILBERT,		1917, 17D, 20, 22, 30, 32, 37
2.4653		HILBERT,		1938, 42
4.4254		HILBERT		1922, 23, 26
4.4643		HILES		1922, 22BH
2.46		HILLSBORO,		1954
7.5574	SLR	HILLSBORO,		1917
1.2643		HILLSDALE, WISC.		1940
7.4643	DLR	HIXTON		1917, 26, 32, 38
1.2574		HOLMEN,		1918
4.4254		HOLMEN		1923
2.4254		HORICON	CQ	1917
2.4263		HORICON,		1926, 30, 31, 32
2.46		HORICON,		1922, 23, 25, 26, 31, 37
2.46	CON	HORICON,		1938
2.465		HORICON,		1917
2.4663		HORICON,		1922, 31, 38, 40
2.64(5/9)		HORICON		1954
2.669		HORICON		1938, 43

4.4254		HORICON		1926
2.4654		HORTONVILLE		1922
2.467005		HORTONVILLE, / WI		1967
2.66		HORTONVILLE,		1908
2.4283		HURLEY,		1931, 38, 40, 45
2.46		HURLEY,		1922, 26, 32, 38
2.46	CON	HURLEY	CQ	1938
2.4644		HURLEY,		1938, 50, 54
2.467005		HURLEY, / WI		1969
2.64(5/9)		HURLEY		1938
4.4273		HURLEY		1917, 22, 25
2.461	CON	HUSTISFORD,		1954
4.42(13/73)		HUSTISFORD		1917
0.4643		HUSTISFORD	CQ	1930
1.51524		INDEPENDENCE	CQ	1923, 40
2.4214		INDEPENDENCE,		1918
2.4643		INDEPENDENCE		1924
4.4254		INDEPENDENCE		1923, 26, 33
2.46	CON	IOLA,		1938, 54
2.46002		IOLA	CQ	1938
2.4653		IRON RIDGE	CQ	1926
4.4644		IRON RIVER	CQ	1926, 31
2.4647	PIC	IXONIA,		1938
2.64(5/9)		IXONIA		1954
2.460005		JACKSON / WI	CQ	1967
2.4214		JACKSONPORT	CQ	1928
4.4213	PRO	JANESVILLE,		1916
2.425		JEFFERSON	CQ	1917
2.4263		JEFFERSON,		1922, 23, 26, 30, 30D, 31, 31D
2.46		JEFFERSON,		1923, 31, 37, 38
2.46	CON	JEFFERSON,		1928SD, 31, 38
2.461	CON	JEFFERSON,		1954
2.4653		JEFFERSON,		1938, 46
2.64(5/9)		JEFFERSON		1938, 54
1.1243		JOHNSON,		1926
2.460005		JOHNSON, / WI		1981
2.4614		JOHNSON CREEK,		1926, 54
2.46(1/9)		JOHNSON CREEK		1954
2.64(5/9)		JOHNSON CREEK		1938
2.425		JUDA	CQ	1932
2.64(5/9)		JUNCTION CITY		1938
2.4664		JUNEAU	CQ	1917, 22, 26, 32, 38
1.26	CON	KAUKAUNA,		1959

2.4263		KAUKAUNA,	1938, 40
2.44(5/9)		KAUKAUNA	1954
2.46		KAUKAUNA,	1926, 31, 34, 38
2.46	CON	KAUKAUNA,	1954, 59
2.461		KAUKAUNA,	1922
2.66		KAUKAUNA	CQ 1917
2.669		KAUKAUNA	1938
4.461		KAUKAUNA,	1922, 23
2.4656		KENDALL	CQ 1931
2.4293		KENNAN	CQ 1926
2.44(5/9)		KENNAN	1938
2.4644	CON, PIC	KENNAN,	1959D
2.469		KENNAN	CQ 1926
1.2644		KENOSHA,	1931D
1.1283		KENOSHA	1924, 26
2.460005		KENOSHA, / WI	1974
2.467005		KENOSHA, / WI	1966
2.46		KEWASKUM,	1926, 31
2.4644		KEWASKUM	CQ 1921
2.4654		KEWASKUM,	1926, 31, 38
2.669		KEWASKUM	CQ 1938
2.4644	CON	KEWAUNEE,	1912, 13
2.465		KEWAUNEE,	1913, 17, 20
2.467005		KEWAUNEE, / WI	1954
4.4254		KEWAUNEE	1923
4.4644		KEWAUNEE	1926, 28SD, 31, 38
4.4643		KEWAUNEE	1917, 22
7.4643	DLR	KEWAUNEE	1917, 17DOC, 38, 48, 54
2.42941		KIEL,	1926, 30, 31, 31D, 32, 38
2.460005		KIEL, / WI	1979
2.46742		KIEL,	1926
2.469		KIEL	1931D, 38, 54, 59D
2.4694		KIEL,	1908
2.4644		KILBOURN,	1922, 25SD
2.4644	CON	KILBOURN,	1922
4.4253		KILBOURN	1917, 19, 22
4.4254		KIMBERLY	1922
4.4274		KIMBERLY	1930
2.46	CON	KNAPP,	1954
2.469		KNAPP	1938
2.4674		KOHLER,	1914, 22, 23
4.42732		KOHLER / WISC.	1922, 31, 31D
2.46		KRAKOW,	1938, 48



1.2274		LA CROSSE,		1912PPD
1.4614		LA CROSSE		1931D
4.4614		LA CROSSE		1926
4.4643		LA CROSSE,		1922
2.5674		LA FARGE	CQ	1917
1.2644	ASA	LAKE GENEVA,		1917
2.66		LAKE GENEVA	CQ	1908
2.4214		LAKE GENEVA	CQ	1912
2.4283	CON	LAKE GENEVA,		1938
2.4254		LAKEMILLS,		1926, 31
2.4263		LAKEMILLS,		1938
2.46		LAKEMILLS	CQ	1908
2.4654		LAKEMILLS	CQ	1931, 38
2.64(5/9)		LAKEMILLS	CQ	1938
2.66004		LAKE MILLS	CQ	1917
4.4613		LAKE NEBAGAMON,		1930
2.46		LANCASTER,		1937, 38, 48
2.4644		LANCASTER	CQ	1914
2.669		LANCASTER		1938
4.42(13/73)		LANCASTER		1917, 19, 22
4.42(54/74)		LANCASTER		1923
4.4274		LANCASTER		1926
4.4644		LANCASTER		1926, 31
2.4287	PIC	LAONA	CQ	1926
2.4664		LAONA,		1926, 32
2.66641		LAONA		1949
4.4274		LAONA		1930, 31, 32
7.4643	DLR	LAONA		1918
1.1243		LARSEN,		1933
2.46	CON	LARSEN,		1954
1.1283		LA VALLE		1938
2.465		LA VALLE,		1922
2.5674		LA VALLE	CQ	1926
2.4274		LENA		1937, 40
2.44(5/9)		LENA		1938, 54
2.46		LENA,		1938
2.46	CON	LENA,		1954, 59D
2.46002		LENA	CQ	1918
2.469		LENA	CQ	1950
4.4254		LENA		1926
2.4214		LITTLE CHUTE,		1926, 30, 38
2.46	CON	LITTLE CHUTE,		1960
2.64(5/9)		LITTLE CHUTE		1938

2.425		LIVINGSTON,		1932
2.625		LIVINGSTON		1954
2.469		LODI		1940, 54
2.46942		LODI	CQ	1917, 22
2.46951		LODI,		1926
4.42(74/54)		LODI		1917, 19
2.4243		LOGANVILLE,		1938
2.46	CON	LOMIRA,		1954
2.460005		LOMIRA, / WI		1968
2.4664		LOMIRA	CQ	1926
2.469		LOMIRA		1938
2.4694		LOMIRA,		1914
2.46633	PIC	LONE ROCK,		1934, 38
2.469		LOYAL	CQ	1908
2.42832		LUCK,		1926, 31, 38
2.46	CON	LUCK,		1954
2.421		LUXEMBURG,		1922
2.4254		LUXEMBURG,		1926, 32, 33
2.4263		LUXEMBURG,		1938, 40
2.64(5/9)		LUXEMBURG,		1949
2.5654		LUXEMBOURG	CQ	1908
4.4254		MADISON,		1917D, 23, 32
4.4273		MADISON,		1922, 25SD
4.4273		MADISON		1922, 23, 25SD, 26, 30-32
4.46431		MADISON,		1932
4.4644		MADISON,		1917, 17D, 22, 23, 25, 25SD, 26
2.4214		MAIDEN ROCK	CQ	1931
2.4674		MANAWA	CQ	1917
2.469		MANAWA,		1931, 34, 38, 40
4.4254		MANAWA		1932
4.4643		MANAWA	CQ	1914
2.46	CON	MANITOWOC	CQ	1954, 61
0.4642		MAPLE		1926, 38
1.464305		MAPLEWOOD, / WI		1965, 66, 67, 68
2.4263		MARATHON	CQ	1931D, 38, 59D
4.4644		MARATHON		1926
2.44(5/9)		MARIBEL		1931D
2.469		MARIBEL		1938
2.66		MARINETTE	CQ	1908, 13
2.4644		MARINETTE,		1908, 14
7.4643	DLR	MARINETTE		1917, 17DOC, 18, 20
1.1283	ASA	MARION,		1922
2.460005		MARION, / WI		1981

2.46		MARSHALL	CQ	1932
2.4644		MARSHALL,		1917
2.466454		MARSHALL,		1938
2.460005		MARSHFIELD, / WI		1972
4.4213		MARSHFIELD		1922, 26, 30, 32
4.4613		MARSHFIELD,		1922, 23
4.46136		MARSHFIELD		1922, 26, 30, 38
4.4614		MARSHFIELD		1926
4.46441		MARSHFIELD		1922, 25SD, 26
1.267		MAUSTON,		1925SD
2.4674		MAUSTON,		1937, 40
2.46	CON	MAYVILLE	CQ	1954
2.4644		MAYVILLE	CQ	1914
2.64(5/9)		MAYVILLE		1954
2.425	CON	MAZOMANIE,		1917, 26, 31, 32
2.465		MAZOMANIE	CQ	1923
2.56	CON	MAZOMANIE,		1961
2.64(5/9)		MAZOMANIE	CQ	1938
2.66		MAZOMANIE	CQ	1917
1.2643		MCFARLAND,		1967
2.4263		MCFARLAND	SMc,CQ	1938
2.4663		MCFARLAND,		1926
2.4254		MEDFORD,		1938
2.4293		MEDFORD,		1926, 33, 58
2.46	CON	MEDFORD,		1954, 60
2.4653		MEDFORD,		1938
4.46141		MEDFORD		1926
2.46	CON	MELLEN,		1938
2.460005		MELLEN, / WI		1977
2.4674		MELLEN	CQ	1917
2.46		MELROSE,		1926, 31
2.46		MENASHA,		1914
2.4644		MENASHA	CQ	1908
2.465		MENASHA	CQ	1917, 23
2.4674		MENASHA,		1908, 13
4.4254		MENASHA		1922
2.4613		MENOMONEE FALLS,		1930, 36
2.4644		MENOMONEE / FALLS, WIS.		1954
2.464305	CON	MENOMONEE FALLS / WI	CQ	1967
2.48(1/5)		MENOMONEE FALLS	CQ	1938
2.6214		MENOMONEE FALLS	CQ	1917
2.64(1/4)	PIC	MENOMONEE FALLS	CQ	1926
2.66(44/94)		MENOMONEE FALLS	CQ	1938

2.66		MENOMONIE	CQ	1917
4.4613		MENOMONIE,		1917
4.46132		MENOMONIE,		1921
2.46		MERCER,		1931
2.46	CON	MERCER,		1954
2.468		MERCER	CQ	1938
1.4644	CON	MERRILL		1922
2.425		MERRILL,		1922
2.4644		MERRILL		1917
2.465		MERRILL,		1913
2.465		MILLADORE		1938
2.4663		MILLADORE,		1926, 30, 31, 38
2.4256		MILTON	CQ	1926
2.4293		MILTON,		1926, 30
2.46		MILTON		1916, 17
2.4674		MILTON,		1913
2.469		MILTON,		1922, 23, 30, 32
2.46941		MILTON		1938
2.46	CON	MILTON JUNCTION,	JCT	1954
2.4213		MILWAUKEE	CQ	1914
2.4514	CON	MILWAUKEE,		1908
2.4263		MILWAUKEE,		1938
2.4614		MILWAUKEE	CQ	1917
4.4213		MILWAUKEE		1918, 22, 25SD, 26, 31, 31D, 32
4.4213		MILWAUKEE,		1916, 19, 22, 23, 26, 31, 32
4.4613		MILWAUKEE		1922, 25SW, 26, 32
4.46134		MILWAUKEE		1922, 25SD
4.46134		MILWAUKEE,		1918, 22, 23, 26
4.46136		MILWAUKEE		1922
4.4614		MILWAUKEE		1917, 18, 26
4.4614		MILWAUKEE,		1922, 23, 26, 31D
4.46434		MILWAUKEE		1922, 23, 25SD
4.4643		MILWAUKEE,		1922, 23, 26, 31
7.4644	VBR, PRO	MILWAUKEE		1912PPD, 14, 14D, 17-18
2.460005		MINERAL POINT, / WI		1966
1.1416		MISHICOT	CQ	1938
1.4673		MISHICOT		1938, 54
2.465		MISHICOT,		1923, 32
1.16		MONROE,		1917
2.4664		MONROE	CQ	1908
2.46		MONTFORT,		1926, 32
2.5664		MONTFORT	CQ	1926
2.4214		MONTICELLO,		1926, 31, 32



2.46		MONTICELLO	CQ	1917
2.460005		MONTICELLO, / WI		1978
0.4283	PIC	MOSINEE	CQ	1912, 13
2.4263		MOSINEE,		1931, 34
2.46		MOSINEE,		1922
2.4664		MOSINEE,		1917, 22, 40
1.2664		MOUNT CALVARY,		1954
1.5564		MOUNT CALVARY		1954
2.461		MOUNT CALVARY,		1922, 23
2.4214		MOUNT HOREB	CQ	1914, 17
2.42146		MOUNT HOREB,		1926, 31, 31D, 32, 38
2.425		MOUNT HOREB	CQ	1922
2.460005		MOUNT HOREB, / WI		1968
2.461	CON	MOUNT HOREB,		1954, 61
2.56	CON	MOUNT HOREB,		1954
2.5644		MOUNT HOREB	CQ	1923
2.64(5/9)		MOUNT HOREB		1938, 43, 48, 54
2.66		MOUNT HOREB	CQ	1917
2.4263		MUKWONAGO,		1930, 32
2.46		MUSCODA,		1917, 26
2.6694		MUSCODA		1938
2.460005		MUSKEGO / WI		1968
2.46		NASHOTAH	CQ	1938
2.460005		NASHOTAH, / WI		1954
2.64(5/9)		NASHOTAH		1954
2.4674		NECEDAH		1932, 38, 40
2.467		NECEDAH,		1937
2.4674		NEENAH,		1914
4.4254		NEENAH		1917, 22, 23
4.4643		NEENAH		1917
4.46441		NEENAH		1922, 23, 26
4.4662		NEENAH		1917
4.42(13/73)		NEILLSVILLE		1917
2.46	CON	NEKOOSA,		1957
4.4254		NEKOOSA		1926
4.4644		NEKOOSA		1938
2.4283		NELSON	CQ	1926
2.4293		NELSON,		1938
2.46	CON	NELSON,		1954
2.669		NELSON	CQ	1938
2.66		NELSONVILLE		1917
1.464308		NEOPIT, WI		1966
1.461		NESHKORO	CQ	1940

2.46	CON	NESHKORO,	1926
2.467005		NESHKORO, / WI	1968
2.4214		NEW AUBURN,	1922, 26, 30, 31
4.48(13/73)		NEW AUBURN	1916, 17
2.46	CON	NEW FRANKEN,	1938
2.425		NEW GLARUS	CQ 1922
2.4654		NEW GLARUS,	1938
2.467005		NEW GLARUS / WI	CQ 1968
4.4274		NEW GLARUS	1926, 31
4.4644		NEW GLARUS	1926, 39, 43
2.460005		NEW HOLSTEIN, / WI	1954, 68
4.4614		NEW HOLSTEIN	1926
2.46		NEW LISBON,	1940
4.4644		NEW LISBON	1926, 38
2.4243		NEW LONDON,	1938
2.66		NEW LONDON	CQ 1914
2.467		NEWTON,	1954
2.669		NEWTON	1938
2.44(54/94)		NIAGARA	1938
2.669		NIAGARA	CQ 1938
2.46		NICHOLS	CQ 1932
2.46	CON	NICHOLS,	1938, 48
2.460005		NICHOLS, / WI	1954
2.460005		NORTH LAKE, WI	1967
2.4243		NORWALK	CQ 1938
2.425		NORWALK	1938
2.46		NORWALK	1954
4.4254		NORWALK	CQ 1922, 26
2.4263		OAKFIELD,	1926, 31, 37
2.46		OAKFIELD	CQ 1931
2.465		OAKFIELD,	1922
2.669		OAKFIELD	CQ 1954
1.1644	ASA	OCONOMOWOC,	1931D
4.4613		OCONOMOWOC	1922, 25SD, 26, 30, 32, 33
4.4613		OCONOMOWOC,	1917, 22, 22BH, 23, 26
2.4644		OCONTO,	1931D, 54
4.4274		OCONTO FALLS	1925SD
2.465		ODANAH,	1919, 26
2.64(5/9)		OKAUCHEE	1954
2.46		OLEMA	CQ 1938
4.4254		OMRO	1923
2.460005		ONALASKA, / WI	1954
7.4662	PIC	ONALASKA,	1926, 29, 30, 31

4.4663	PIC	ONALASKA,		1928SD, 31, 38, 40
1.1256		ONTARIO,		1950
1.1656		ONTARIO,		1926
2.4263		OOSTBURG,		1926, 31, 37
2.46		OOSTBURG	CQ	1938
2.625		OOSTBURG		1954
4.4254		OOSTBURG		1922, 24, 30, 30D, 31D, 33
1.42524		OREGON		1926
2.4293		OREGON	CQ	1926
2.4243		ORFORDVILLE	CQ	1938
2.4653		ORFORDVILLE,		1938
4.4644		OSCEOLA		1931
2.46		OSHKOSH,		1954
2.64(5/9)		OSHKOSH		1960
2.66641		OSHKOSH	CQ	1931D
2.6694		OSHKOSH		1954, 57
4.4253		OSHKOSH		1926
4.46141		OSHKOSH		1922, 26, 28SD, 30, 32, 34
2.4293		OSSEO	CQ	1938
2.4294		OSSEO,		1926
2.4664		OSSEO		1926
2.469		OSSEO		1938
2.6*69		OSSEO	CQ	1922
2.425		OWEN		1938, 55
2.4293		OWEN,		1926, 31, 32, 34, 36, 38
2.42932		OWEN	CQ	1931D, 38, 59D
2.46	CON	OWEN,		1954
2.4664		OWEN,		1922, 26, 46
2.227		OXFORD,		1954
2.467		OXFORD,		1963
2.4674		OXFORD	CQ	1922
2.469		OXFORD,		1938
2.6254		PARDEEVILLE	CQ	1918
2.46002		PEPIN		1917
2.46642		PEPIN,		1926, 32
2.66		PERKINSTOWN	CQ	1917
2.4263		PESHTIGO,		1923, 37, 38
2.46		PESHTIGO,		1914, 23, 26
1.1263		PEWAUKEE	CQ	1922
1.16	CON	PEWAUKEE,		1932, 37, 38
1.1643		PEWAUKEE,		1976
2.4263		PEWAUKEE,		1926, 37, 38
2.46		PEWAUKEE,		1913

2.46	CON	PEWAUKEE,		1938, 54
2.4653		PEWAUKEE	CQ	1938
1.2644		PHILLIPS,		1912, 13
2.4662		PHILLIPS,		1931, 38
2.6664		PHILLIPS		1938
2.466454		PHILLIPS,		1938
2.46	CON	PITTSVILLE,		1954
2.460005		PITTSVILLE, / WI		1954
1.4648		PLAIN	CQ	1938
2.4283		PLAIN,		1938
2.46	CON	PLAIN,		1938
2.467005		PLAIN / WI	CQ	1959D
2.4664		PLAIN,		1926, 28SH, 30
1.1643		PLAINFIELD,		1926
2.4263		PLAINFIELD	CQ	1926, 38
2.6694		PLAINFIELD		1938
1.4613		PLATTEVILLE		1914, 17, 18
2.46		PLOVER,		1922, 26, 31D, 32
2.46		PLOVER		1922, 32
2.425		PLUM CITY		1938
2.669		PLUM CITY		1938
1.4648		PLYMOUTH		1926
1.5614		PLYMOUTH		1926
2.4263		PLYMOUTH,		1917, 31, 38
2.46		PLYMOUTH	CQ	1908
2.46634		PLYMOUTH,		1917, 26, 31
2.4664		PLYMOUTH	CQ	1908
2.64(5/9)		PLYMOUTH	CQ	1938
4.4254		PLYMOUTH		1917, 22, 22BH
2.46	CON	POPLAR,		1968
2.4644		PORTAGE	CQ	1926
4.4644		PORT EDWARDS		1931
4.48(43/74)		PORT EDWARDS	CQ	1922, 26
2.4283		POTOSI,		1926, 40
2.42931		POTOSI,		1940
2.4644		POTOSI,		1954
2.4653		POTOSI,		1938
2.467		POTOSI,		1954, 62
2.469		POTOSI,		1931, 32
2.44(5/9)		POUND / WISC.		1954
2.425		POYNETTE,		1922
2.64(5/9)		POYNETTE		1938, 54
4.4274		PRAIRIE DU SAC		1931



2.625		PRAIRIE FARM		1954
2.46		PRENTICE,		1926
4.4644		PRINCETON		1926, 30, 31, 37, 38, 43
2.4283		PULASKI,		1929, 38, 43
2.46		PULASKI,		1923, 25SD, 26, 31, 32, 34, 38
3.9*644		RACINE / (COOPER STA.) / WIS.	CQ	1912
7.4643	DLR	RANDOLPH		1917, 18, 22
2.4214		RANDOM LAKE	CQ	1938
2.4283		RANDOM LAKE,		1938
2.46		RANDOM LAKE,		1938
2.4654		RANDOM LAKE,		1938
2.4653		READFIELD,		1938
2.4644		READSTOWN	CQ	1954
2.1644		REDGRANITE,		1938
2.425		REDGRANITE	CQ	1922
2.4214		REEDSVILLE,		1938
2.4644		REEDSVILLE,		1938
1.2254		REESEVILLE,		1913
1.5114		REESEVILLE		1916, 17, 19, 20, 22, 23BH, 24
1.5514		REESEVILLE		1917, 19, 22-26
2.46	CON	RIB LAKE	CQ	1960A
2.5664		RIB LAKE		1922
2.669		RIB LAKE		1938, 54
2.4263		RICE LAKE	CQ	1938
2.46		RICE LAKE,		1913
2.46	CON	RICE LAKE	CQ	1938
2.465		RICE LAKE,		1926
4.46134		RICE LAKE,		1917, 22
2.625		RICHFIELD		1954
0.46134		RICHFIELD,		1922
2.46	CON	RICHLAND,		1954
2.5544		RICHLAND CENTER	CQ	1914
2.46	CON	RIO,		1938
4.4613		RIVER FALLS		1926
4.4254		ROSHOLT		1917, 22, 23
2.46		ROYALTON,		1913
1.1543		RUDOLPH,		1938
2.669		RUDOLPH	CQ	1954
2.66		SAINT CLOUD	CQ	1930
2.5214		SAINT CROIX FALLS	CQ	1908, 16, 38
2.561		SAINT CROIX FALLS	CQ	1926, 38, 40
7.4643	DLR	SAINT CROIX FALLS	ST	1917, 20, 32
1.1643	PIC	SAINT FRANCIS,		1926

2.4243		SAINT FRANCIS,		1926, 37
2.46(4/9)	PIC	SAINT FRANCIS		1938, 40
2.525		SAINT FRANCIS,		1917, 20, 22, 23, 25, 26, 30, 32
2.66		SAINT FRANCIS	CQ	1908, 14, 22
2.4243		SAINT NAZIANZ,	CQ	1934, 38
2.4614		SAINT NAZIANZ,		1923, 26, 30, 32, 34
2.46	CON	SALEM,		1961
2.46	CON	SAUK CITY,		1938
2.4653		SAUK CITY,		1938
4.4254		SAUK CITY		1926
2.669		SAUKVILLE		1938
1.2254		SAWYER,		1938
2.46		SAWYER	CQ	1926, 31, 32
2.4674		SAWYER	CQ	1914
4.4253		SAWYER		1917
4.4274		SAWYER		1926, 32
1.166354		SAYNER,		1938
2.4243		SCANDINAVIA,		1930
2.4653		SCANDINAVIA	CQ	1938, 40
2.64(5/9)		SCANDINAVIA		1938
2.4263		SCHOFIELD,		1930, 36, 40
2.46	CON	SCHOFIELD,		1954
2.4653		SCHOFIELD,		1938
2.625		SENECA	CQ	1938
2.4263		SEYMOUR,		1926, 30, 38
2.4663		SEYMOUR,		1940
1.1644		SHARON,		1953
2.46	CON	SHARON,		1954
2.467005		SHARON / WI	CQ	1967
2.469		SHARON,		1923
1.5554		SHEBOYGAN	CQ	1922
0.4514		SHEBOYGAN		1908, 12
1.1614		SHEBOYGAN FALLS, WISC.		1929
1.4614		SHEBOYGAN FALLS,		1926, 30
2.461		SHEBOYGAN FALLS	CQ	1922
2.461005		SHEBOYGAN FALLS / WI	CQ	1968, 78
2.4613		SHEBOYGAN FALLS,		1938, 40
2.4614		SHEBOYGAN FALLS,		1926
2.4643		SHEBOYGAN FALLS,		1926, 31, 38
2.464301		SHEBOYGAN FALLS,		1926
2.6214		SHEBOYGAN FALLS	CQ	1922
2.4263		SHELDON,		1932
2.4653		SHELDON,		1938

2.669		SHELDON	CQ	1938
2.4263		SHELL LAKE	CQ	1926
4.4643		SHELL LAKE		1917
1.1693		SHERWOOD,		1917
2.466654		SHERWOOD	CQ	1930
2.6694		SHERWOOD	CQ	1954
1.466554		SHIOCTON,		1938
2.460005		SHULLSBURG, / WI		1968, 77
2.467005		SHULLSBURG / WI	CQ	1959D
4.46(14/44)		SINSINAWA		1917, 21
7.4643		SINSINAWA		1954
2.428		SIREN	CQ	1922
2.46	CON	SIREN,		1954
2.4674		SIREN,		1938
2.44(5/9)		SISTER BAY		1953
2.465		SISTER BAY	CQ	1926, 31, 38
4.42(54/74)		SLINGER		1926
4.4274		SLINGER		1931
2.64(5/9)		SOBIESKI		1938, 54
2.5214		SOLDIERS GROVE	CQ	1912
2.56		SOLDIERS GROVE	CQ	1922
4.4274		SOLDIERS GROVE		1926
4.4644		SOMERS		1938
2.6694		SOMERSET		1938
4.4614	CON	SOUTH MILWAU- / KEE, WIS.		1923
4.5213		SUOTH MIL- / WAUKEE, WIS.		1922, 23
2.46		SOUTH RANGE,		1938
1.42		SPENCER		1938
2.46	CON	SPENCER	CQ	1922
2.467005		SPENCER, / WI		1971
2.6694		SPENCER		1954
2.4664		SPIRIT	CQ	1930
2.4263		SPOONER,		1926, 31
2.46		SPOONER	CQ	1917
2.4644		SPOONER	CQ	1926
2.4664		SPOONER	CQ	1913
2.669		SPOONER		1938, 40
7.4643	DLR	SPOONER		1919
2.4214		SPRING GREEN,		1927, 29
2.467005		SPRING VALLEY / WI	CQ	1968
2.56	CON	SPRING VALLEY,		1954
2.625		SPRING VALLEY	CQ	1938
2.64(5/9)		SPRING VALLEY	CQ	1938

2.6644		SPRING VALLEY	CQ	1934
2.465		STANLEY,		1912
2.4663		STANLEY,		1942
4.46441	PRO	STANLEY		1923, 26
2.4263		STATESAN,		1926
2.460005		STETSONVILLE, / WI		1968
4.4613		STEVENS POINT,		1922, 22BH, 23
4.5213		STEVENS POINT,		1926, 32
5.4283		[ STEVENS / POINT, ] [ WIS. ]		1922
2.4644	CON	STEVENSVILLE,		1938
2.425	CON	STRATFORD,		1938
4.4254		STRATFORD		1926, 31
4.4644		STRATFORD		1931, 38
2.4644		STRUM,		1954
2.4656		STRUM,		1926, 30
2.5644		STURGEON BAY	CQ	1908, 22
2.66		STURGEON BAY	CQ	1917
4.42(54/74)		STURGEON BAY		1917D
1.1613		STURTEVANT,		1938
1.4152	PRO	STURTEVANT,		1938
2.4183		STURTEVANT,		1938
2.465		STURTEVANT,		1930, 32
2.4214		SUN PRAIRIE,		1912, 17
1.1253		SUPERIOR,		1926
4.4253		SUPERIOR		1917, 18
7.4643	DLR	SUPERIOR		1917D, 22, 26, 30D, 31, 32, 38
2.4263		SURING,		1926, 31
2.4663		SURING,		1938
2.467		SURING,		1954
2.4694		SURING		1938
4.4254	PRO	TAYLOR		1917, 30
4.4644		THERESA		1938
1.46(64/62)	PIC	THIENSVILLE, WIS. \\ PARCEL POST		1932
4.4274		THIENSVILLE		1926
2.4293		THORP,		1929, 38
2.4653		THORP,		1938
2.4664		THORP,		1913
2.469		THORP,		1938
4.4274		THORP		1932
4.42744		THORP		1932
2.4243		THREE LAKES,		1926
2.46		THREE LAKES,		1926
2.4644		THREE LAKES,		1960

2.465		THREE LAKES,		1940
2.64(5/9)		THREE LAKES		1938
2.425		TIGERTON,		1954
2.4644		TIGERTON,		1938
2.469		TILTON,		1930
7.4662	SLR	TIPLER		1917
2.4283		TOMAH,		1926, 31, 32, 38
2.44(5/9)		TOMAH		1931D
2.46	CON	TOMAH,		1954, 59D
2.4664		TOMAH,		1926, 32
2.465		TOMAHAWK,		1913
2.467005		TOMAHAWK, / WI		1974
7.6644	SLR	TOMAHAWK		1922
2.4214		TREMPEALEAU,		1932
2.4243		TREMPEALEAU,		1932
2.46		TRIPOLI,		1922
2.464305		TRIPOLI, / WI		1977
1.16	CON	TURTLE LAKE,		1932
2.4283		TURTLE LAKE	CQ	1938
2.4243		TWIN LAKES,		1926
2.1614		TWO RIVERS,		1922
2.4654		TWO RIVERS	CQ	1908
4.4613		TWO RIVERS,		1917, 22
4.46136		TWO RIVERS		1926
2.4283		UNION GROVE	CQ	1940
2.4653		UNION GROVE,		1938
1.1616		VALDERS, WISC		1954
2.46		VALDERS,		1930, 38, 40
2.669		VALDERS		1954
2.44(5/9)		VERONA,		1958
2.4674		VERONA,		1938, 40
2.4674		VESPER		1937
2.428		VIOLA,		1922
2.669		VIOLA		1938
2.44(5/9)		VIROQUA	CQ	1953
2.46		VIROQUA,		1914
2.46	CON	VIROQUA,		1954, 59D
4.4253		VIROQUA		1926
4.46141		VIROQUA,		1922, 23, 26
4.4644		WABENO		1938
4.4273		WALDO		1922, 26, 31
4.4274		WALDO		1922, 32
2.465		WALWORTH	CQ	1912

2.425		WASHBURN	CQ	1938
2.46	CON	WASHBURN,		1954
2.4644		WASHBURN	CQ	1932
2.465		WASHBURN,		1917
2.669		WASHBURN	CQ	1938
2.4613		WASHINGTON ISLAND,		1931, 32, 33, 38
2.46		WATERFORD,		1938
2.46		WATERLOO		1926
2.46	CON	WATERLOO,		1938, 54
2.56		WATERLOO,		1912
2.625		WATERLOO		1938, 54. 56
4.4274		WATERLOO		1926
1.1263		WATERTOWN,		1922
1.16		WATERTOWN,		1922
1.1644		WATERTOWN,		1922, 25SD, 26
1.2694		WATERTOWN,		1923
2.46		WATERTOWN	CQ	1908
2.4644		WATERTOWN	CQ	1912
1.2252		WAUNAKEE		1926
2.46		WAUNAKEE,		1938
2.465		WAUNAKEE,		1938
2.468	PIC	WAUNAKEE	CQ	1938, 54
4.4644		WAUNAKEE		1938, 40
2.46	CON	WAUPACA,		1954
2.4663		WAUPACA		1908
4.42(54/74)		WAUPACA		1926
4.4273		WAUPACA		1925SD, 26
1.1614		WAUSAU,		1954
4.4644		WAUSAU		1926, 32
2.66		WAUSAUKEE	CQ	1915
1.1244	PRO	WAUTOMA, WISC.		1926
1.4253		WAUTOMA		1922, 26, 30
2.46		WAUTOMA	CQ	1926
2.46	CON	WAUTOMA,		1939, 60
2.460005		WAUTOMA, / WI		1954
2.669		WAUTOMA		1938
2.4263		WAUZEKA,		1938
2.669		WAUZEKA		1938, 40
2.46		WEBSTER,		1926, 53
2.46	CON	WEBSTER,		1923, 54
2.5653		WEBSTER	CQ	1938
2.4264		WEST BEND	CQ	1917D
2.46		WEST BEND	CQ	1918

2.46		WESTBORO,		1914, 31
2.46	CON	WESTBORO,		1954
1.1643		WESTBY,		1926
2.466454		WESTBY,		1954
2.4694		WESTBY		1938
2.4214		WEST DE PERE	CQ	1922
2.46	CON	WEST DE PERE	CQ	1954
2.461		WEST DE PERE	CQ	1922
2.4653		WEST DE PERE,		1926
2.625		WEST DE PERE	CQ	1938, 40
2.64(54/94)		WEST DE PERE		1938
2.460005		WESTFIELD / WI	CQ	1954
2.4644		WESTFIELD	CQ	1908
2.6694		WESTFIELD		1938
4.4274		WESTFIELD		1932, 33
4.4644		WESTFIELD		1926, 31, 38, 39
2.4672		WEST SALEM		1921
4.4274		WEST SALEM		1926, 30
4.4644		WEST SALEM		1938
2.4582	PIC	WEST WRIGHTSTOWN		1938
4.4643		WEYAUWEGA		1922, 26
1.2642		WEYERHAEUSER,		1926
2.4243		WEYERHAUSER,		1938
2.625		WEYERHAUSER	CQ	1938
2.5644		WHITEHALL,		1918
2.669		WHITEHALL		1938
4.42(13/73)		WHITEHALL		1917, 22
4.4643		WHITEHALL		1926, 32, 34
7.5573	SLR	WHITEHALL,		1909, 14, 17, 19, 20, 24
4.4273		WHITEWATER		1926
2.4644		WILD ROSE,		1945
2.425		WILLIAMS BAY,		1914
2.4282		WILLIAMS BAY	CQ	1938
2.4653		WILLIAMS BAY,		1926, 32
2.64(5/9)		WILLIAMS BAY		1938
2.625		WILSON		1954
4.4644		WILSON		1938
2.46		WILTON,		1938
2.4653		WILTON,		1938
2.669		WINNEBAGO	CQ	1938
4.4644		WINNEBAGO		1938
2.46	CON	WINNECONNE	CQ	1938
2.56	CON	WINNECONNE	CQ	1954



2.64(5/9)		WINNECONNE	CQ	1954
4.42124		WINNECONNE		1926
4.4643		WINNECONNE		1930
2.4613		WISCONSIN DELLS,		1923, 26, 30, 31, 32, 38
2.4614		WISCONSIN DELLS,		1932
2.5214		WISCONSIN DELLS,		1926, 31
2.56	CON	WISCONSIN DELLS,		1959D
2.66		WISCONSIN DELLS		1938, 40
2.66(44/94)		WISCONSIN DELLS		1938, 44
4.4613		WISCONSIN / RAPIDS, WIS.		1917, 22, 26, 32
4.5213		WISCONSIN / RAPIDS, WIS.		1917, 22, 26
4.4614	CON	WISCONSIN RAPIDS,		1917D, 22, 31, 31D, 32
4.5613	PRO	WISCONSIN RAPIDS		1922, 25SD, 26, 31, 31D, 32
4.56434	CON	WISCONSIN RAPIDS		1918, 22, 23
2.4674		WITHEE	CQ	1922, 33, 37
4.4254		WITHEE		1922, 23
2.46	CON	WITTENBERG	CQ	1954
2.460005		WITTENBERG, / WI		1968
2.4656		WONEWOC	CQ	1922
4.4644		WOOD		1931, 40
1.1242		WOODVILLE,		1917
2.4644		WOODVILLE,		1938
2.465		WOODVILLE,		1926
2.4254		WOODWORTH,		1926, 31
2.5644		WOODWORTH,		1962, 63, 64
2.460005		WRIGHTSTOWN, / WI		1968
2.625		WRIGHTSTOWN		1954
2.4644		WYOCENA,		1957
1.16		ZACHOW, WISC.		1954, 63